

# AWM @ KU

Association for Women in Mathematics  
University of Kansas Student Chapter

***Introduction.*** The AWM @ KU is a very active student-run organization that is based in the Department of Mathematics at the University of Kansas. We are the fourth student chapter in the country. Our student members are mostly STEM majors and our faculty advisors are active mathematics researchers and teachers. We hold weekly meetings and organize weekly talks throughout the Fall and Spring semesters. We serve the Lawrence community through various activities and by being active contributors and movers during the Mathematics Awareness Month.

## ***Purpose of the AWM @ KU***

- To promote a friendly environment for all graduates and undergraduates interested in mathematics.
- To encourage women to pursue mathematics is a way to foster a cooperative mathematical environment.

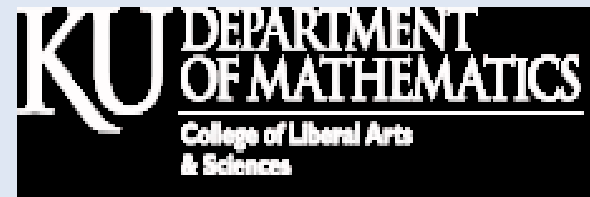
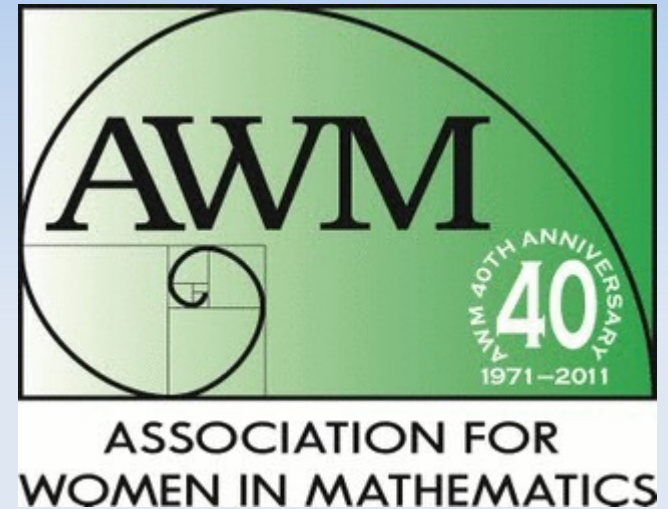
# Abstract

The poster presents the University of Kansas Student Chapter of AWM, with its activities focused on maintaining a friendly environment for all graduates and undergraduates, encouraging women to pursue mathematics, and promoting interest in mathematics, leadership and community service.

To succeed in its mission, the chapter brings as speakers remarkable women who are leaders in their careers in science, technology, engineering and mathematics (STEM). The activities make the members and friends of the chapter aware of the power, excitement and beauty of mathematics and its role in STEM education. They stress the importance of leadership and community service, and address issues of balancing career and family.

# Brief History

The AWM @ KU started 10 years ago, through the initiatives of Prof. Bozena Pasik-Duncan... More story (ask)...



# Governance

Our organization holds a yearly election of four student officers: *President, Vice-President, Secretary, and Treasurer*. Since we started ten years ago, our President had always been one of the best female PhD Mathematics students in the department.

Our officers, with the help of our Faculty Advisors, are in-charge with the over-all management of the organization and the recruitment of student-members.

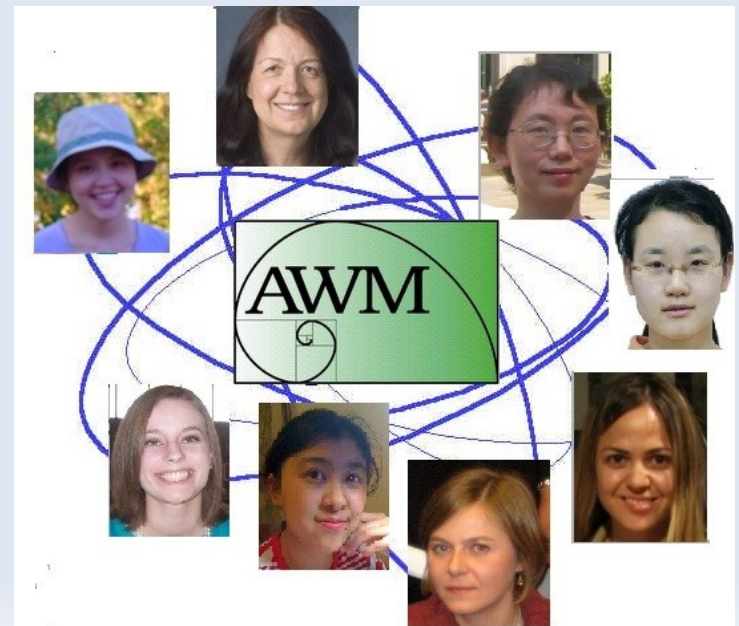
We are officially recognized by the KU Student Senate and officially endorsed and supported by the Department of Mathematics in KU.

## ***AY 2010-11 Faculty Advisors***

Prof Bozenna Pasik-Duncan  
Prof Margaret Bayer  
Prof Myunghyun Oh  
Prof Xuemin Tu

## ***AY 2010-11 Student Officers***

***President*** Xiaoming Song  
***Vice President*** Aleksandra Banasik  
***Secretary*** Warner Cook  
***Treasurer*** Yue Chu



# Activities

- Research Presentations
- Conversations with University Officials
- Inspirational Talks from Alumni and Women Leaders
- Introduction and Welcome of New Women Math Faculty and Students
- Job Search and Interview Tips for Math Majors
- Recognition of Achievements and Awards of Women Math Faculty and Students
- Encouragement of student participation at meetings and activities of professional societies
- Outreach Program Activities through the Math Awareness Month

# Distinguished Speakers

*From KU...*

## ***Chancellor Bernadette Gray-Little***

17th Chancellor of the University of Kansas

**TALK:** Conversations with the Chancellor

**DATE:** February 1, 2010



## ***Prof Judy Wu***

University Distinguished Professor

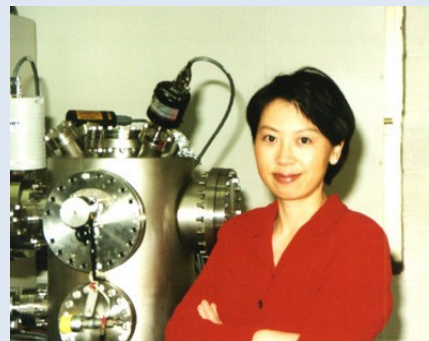
Department: Physics and Astronomy

Research: Material science and material physics,  
Nanoscience, Renewable Energy

**TALK:** Nanotechnology for Renewable Energy:  
Opportunities and Challenges

**DATE:** March 15, 2010

This talk is part of the 2011 KU Math Awareness Month Lecture Program



# Distinguished Speakers

*From KU...*

## ***Prof Donna Ginther***

Professor  
Department: Economics  
Director, Center for Economic  
and Business Analysis  
Research: Scientific labor markets,  
Wage inequality, Scientific entrepreneurship  
**TALK:** Does Science Promote Women?  
Evidence from Academia  
**DATE:** December 7, 2009



## ***Kathy Rose-Mockry***

Program Director  
Emily Taylor Women's Resource Center (KU-EWTRC)  
ETWRC provides information, resources, and assistance on  
women's and gender-related issues  
**TALK:** The Role of Mentors in Fostering Women's Self-Efficacy  
**DATE:** October 11, 2010



# Distinguished Speakers

*From KU...*

## ***Prof Susan Stagg-Williams***

Professor

Department: Chemical and Petroleum Engineering

Research: Production of Biodiesel, Fabrication of selective oxygen permeable membrane reactors

**TALK:** Biofuel Production: A Feedstock to Tailpipe Approach

**DATE:** October 25, 2010





# Distinguished Speakers

*Across the border...*

## ***Prof Jie Chen***

Chairperson, Mathematics Department  
University of Missouri – Kansas City  
Research: Information criterion statistics,  
Multivariate statistical analysis,  
Applied statistics/biostatistics

**TALK:** On the Analysis of DNA Copy Number Data  
using a Change Point Model

**DATE:** November 29, 2010



## ***Prof Liana Segal***

Professor  
University of Missouri – Kansas City  
Research: Commutative algebra,  
Homological algebra

**TALK:** How do we measure  
commutative rings?

**DATE:** November 29, 2010

***AWM @ KU has extended some encouragement and support to the UMKC Math Department in establishing an AWM-UMKC Student Chapter.***



# Math Awareness Month

- AWM @ KU assumes an important role in helping the KU Math Dept in organizing the Mathematics Awareness Month every year.
- We conduct mathematics talks and workshops that are designed for elementary school pupils. (Broader Impacts Activities, NSF)

